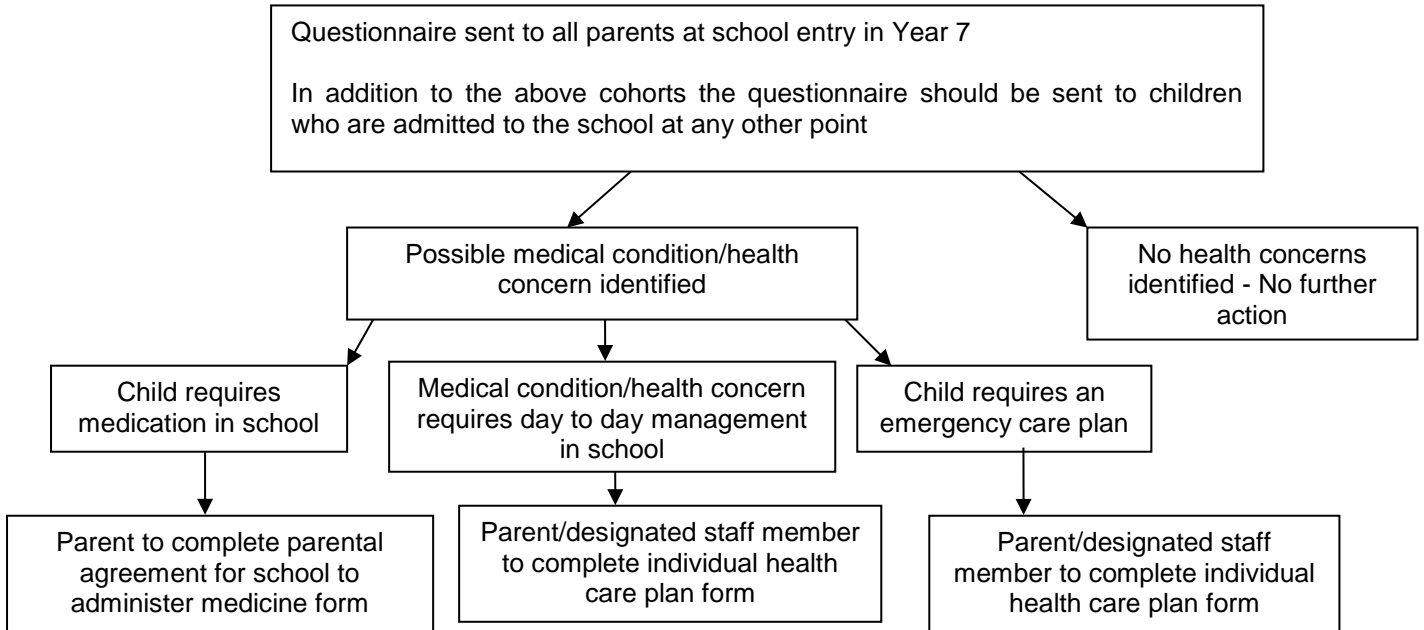


## Appendix A

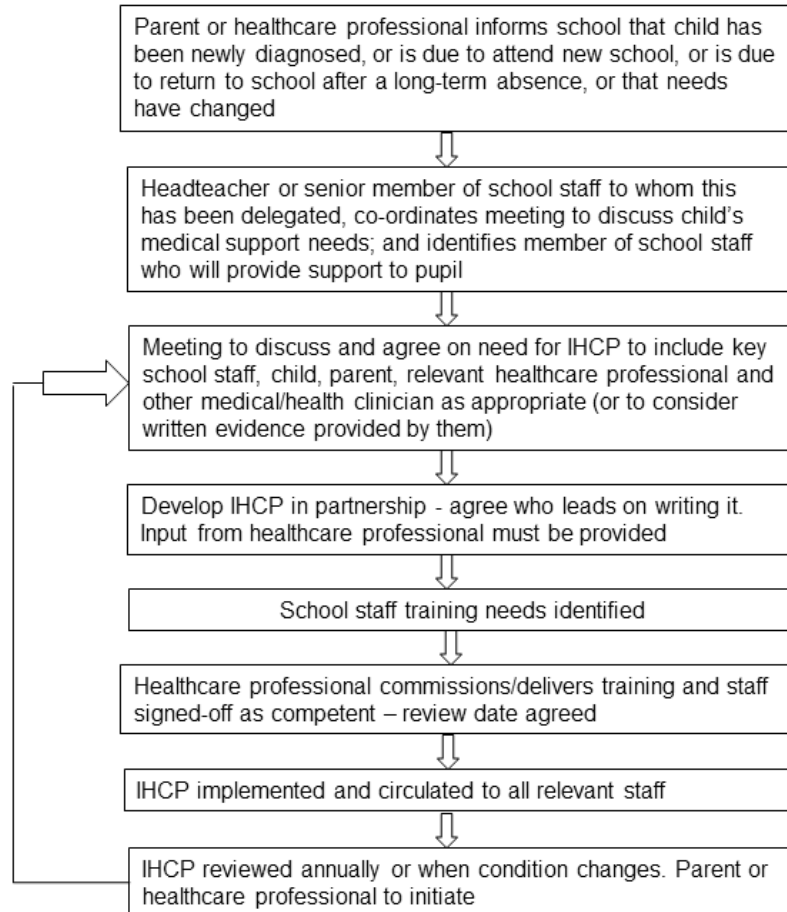


### Identifying students with a medical condition that may require support in school

Not all children with a health condition will require a health care plan in school however the Health Questionnaire form will help schools to ascertain which children require support. In addition the school may be informed at any other point by a parent or health professional if a child is newly diagnosed with a health condition.



# Flowchart





# The Clere School

## Health Questionnaire

Name of Child : .....

Does your child have a medical condition or disability which the school should be made aware of including any allergies?

*Please give details:*

.....  
.....

Does this affect their ability to take part in any lessons? *Please give details:*

.....  
.....

Does your child need regular medication during school hours?

YES/NO

*Please give details:*

.....

My child will be responsible for the self-administration of medicines under supervision of the School Welfare Officer.

YES/NO

I agree to members of staff administering medicines/providing treatment to my child, or in the case of an emergency, as staff may consider necessary.

YES/NO

\*All medicines need to be handed to the School Welfare Officer, and will then be securely stored.

Please give details of any action the school would need to take in an emergency:

.....  
.....  
.....  
.....

Sign:..... Date: .....



## Appendix C

### Permission to administer paracetamol during the school day

Dear Parent

We are writing to advise you that we are now required to have written permission from parents in order to give your child the occasional dose of paracetamol should your child suffer with a headache or any other type of mild/moderate pain. We will provide paracetamol and adhere to the direction on the pack, however should your child be very poorly we will still contact you.

We will inform you via the school planner if we do give your child any paracetamol during school time.

As paracetamol should have a minimum of four hours in between doses, should we need to give them any paracetamol within four hours of arrival in school, we would contact you to ascertain whether they have already had any paracetamol that morning (including paracetamol contained in any cough or cold treatments).

With the above in mind we would be grateful if you would complete the reply slip below and return to Mrs M. Robson at the school. If we do not hear from you, we will assume that you do not wish us to give your child paracetamol whilst at school.

Yours sincerely

Jenny Piper  
School Business Manager

---

### Permission to administer paracetamol during the school day

I am happy for you to give my child paracetamol and confirm that:

- They have had paracetamol before and did not have an allergic reaction to it
- They are not currently taking any medicines that would interact with paracetamol (you can ask a pharmacist for advice)
- I will inform the school if they start any medicines which would interact with paracetamol (you can ask a pharmacist for advice)

Parent signature: ..... Date: .....

Relationship to child: .....

Name of child: .....

Date of birth: ..... Tutor group: .....

