


RECORD DRAWINGS

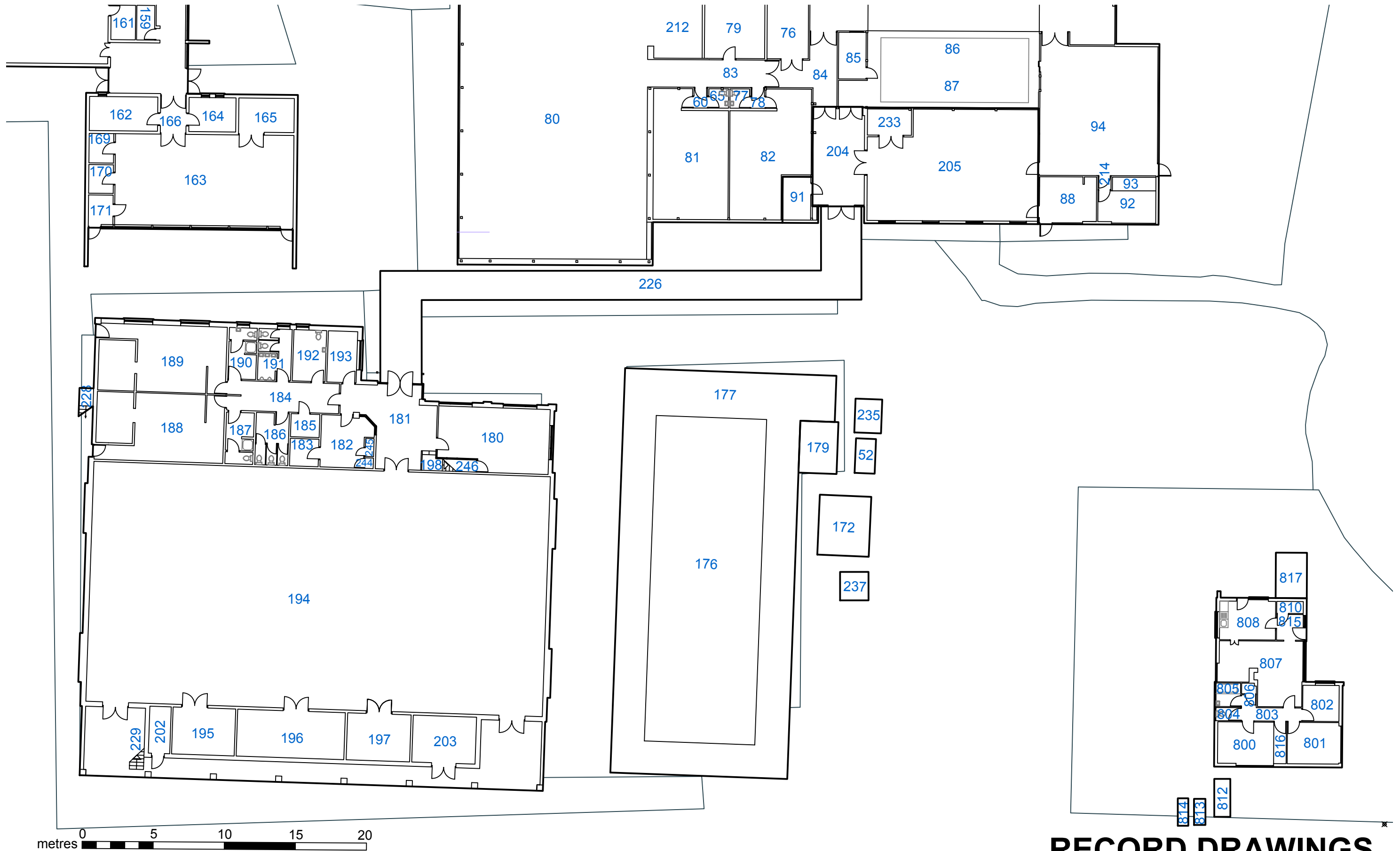


HCC Property Services,
Three Minsters House,
76 High Street, Winchester SO23 8UL.
tel: (01962) 847801

Notes	
1 This drawing is © copyright Hampshire County Council 2012. No unauthorised reproduction permitted. All rights reserved.	3 This map is reproduced from Ordnance Survey material with the permission of Ordnance Survey on behalf of the controller of Her Majesty's Stationary Office © Crown Copyright. Unauthorised reproduction infringes Crown Copyright and may lead to prosecution or civil proceedings. (100019180), (2012)
2 No dimensions are to be scaled from this drawing	

rev	description	date	by
A	HSS amendments added, Updated for Contract,	27/1/15	I.S

PROJECT				SHEET CONTENTS	
The Clere School And Technology College, Newbury RG20 9HP				Property Records Site Plan	 Property Services
4162-10008000764				Sheet 1 of 7	
SCALE	DATE	DRAWN.	CHKD.	DRAWING No.	REVISION
1:500@ A1 1:1000@ A3	2005/2006	CadCap	---	01_Rec/001	A
FILE REF: 4162-10008000764-ClereSchool&TechnologyCollege, The.dwg					



RECORD DRAWINGS

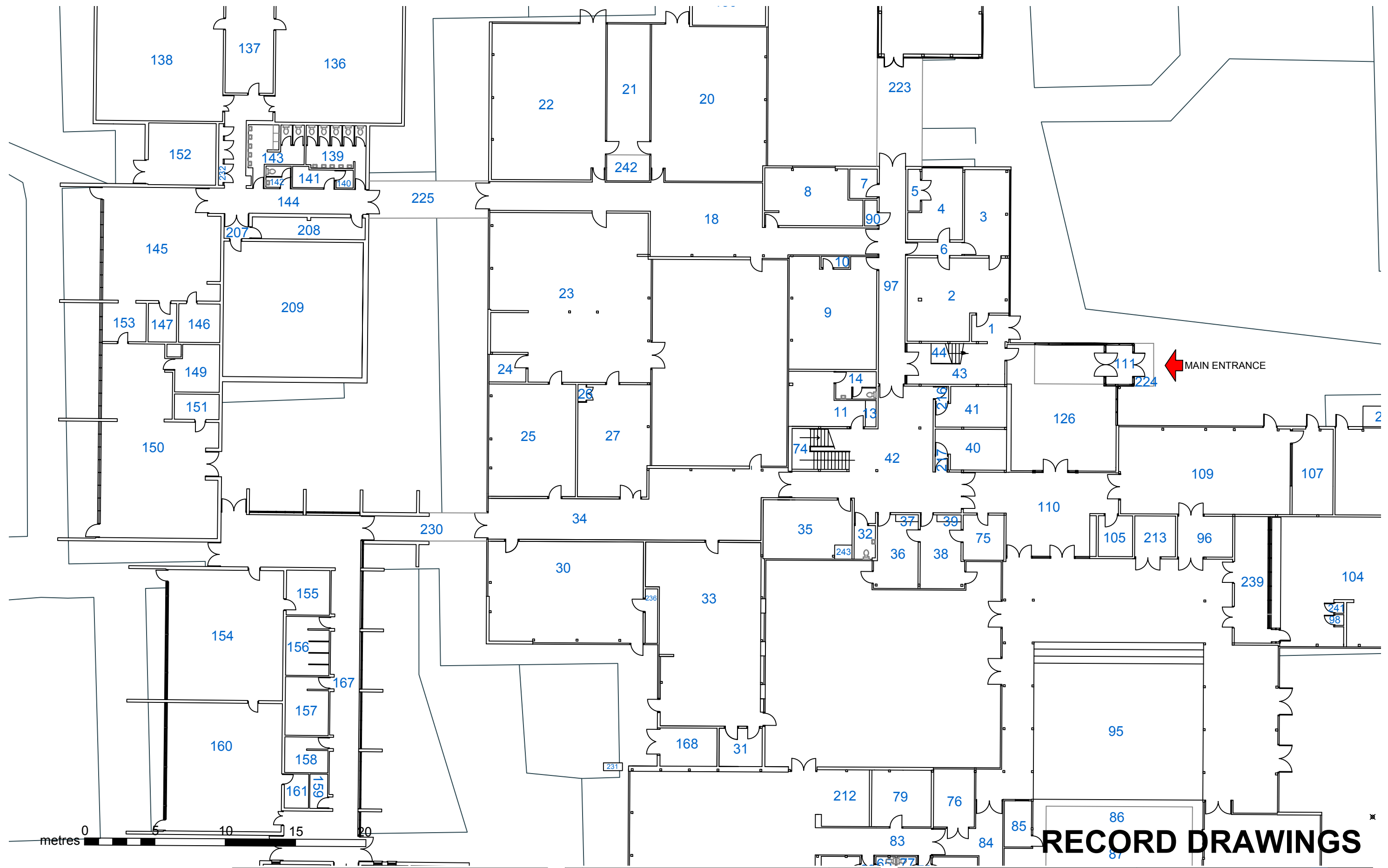


HCC Property Services,
Three Minsters House,
76 High Street, Winchester SO23 8UL.
tel: (01962) 847801

Notes	
1 This drawing is © copyright Hampshire County Council 2012. No unauthorised reproduction permitted. All rights reserved.	3 This map is reproduced from Ordnance Survey material with the permission of Ordnance Survey on behalf of the controller of Her Majesty's Stationery Office © Crown Copyright. Unauthorised reproduction infringes Crown Copyright and may lead to prosecution or civil proceedings. (100019180), (2012)
2 No dimensions are to be scaled from this drawing	

rev	description	date	by
A	HSS amendments added, Updated for Contract,	27/1/15	I.S

PROJECT				SHEET CONTENTS	
The Clere School And Technology College, Newbury RG20 9HP				Unit 001-003,012-014,017,018	
4162-10008000764				022-025,029,030 Ground Floor	
				Plan, Sheet 2 of 7	
				Property Services	
SCALE		DATE	DRAWN.	CHKD.	DRAWING No.
1:125@ A1		2005/2006	CadCap	---	01_Rec/002
1:250@ A3					FILE REF: 4162-10008000764-ClereSchool&TechnologyCollege, The.dwg
					REVISION
					A

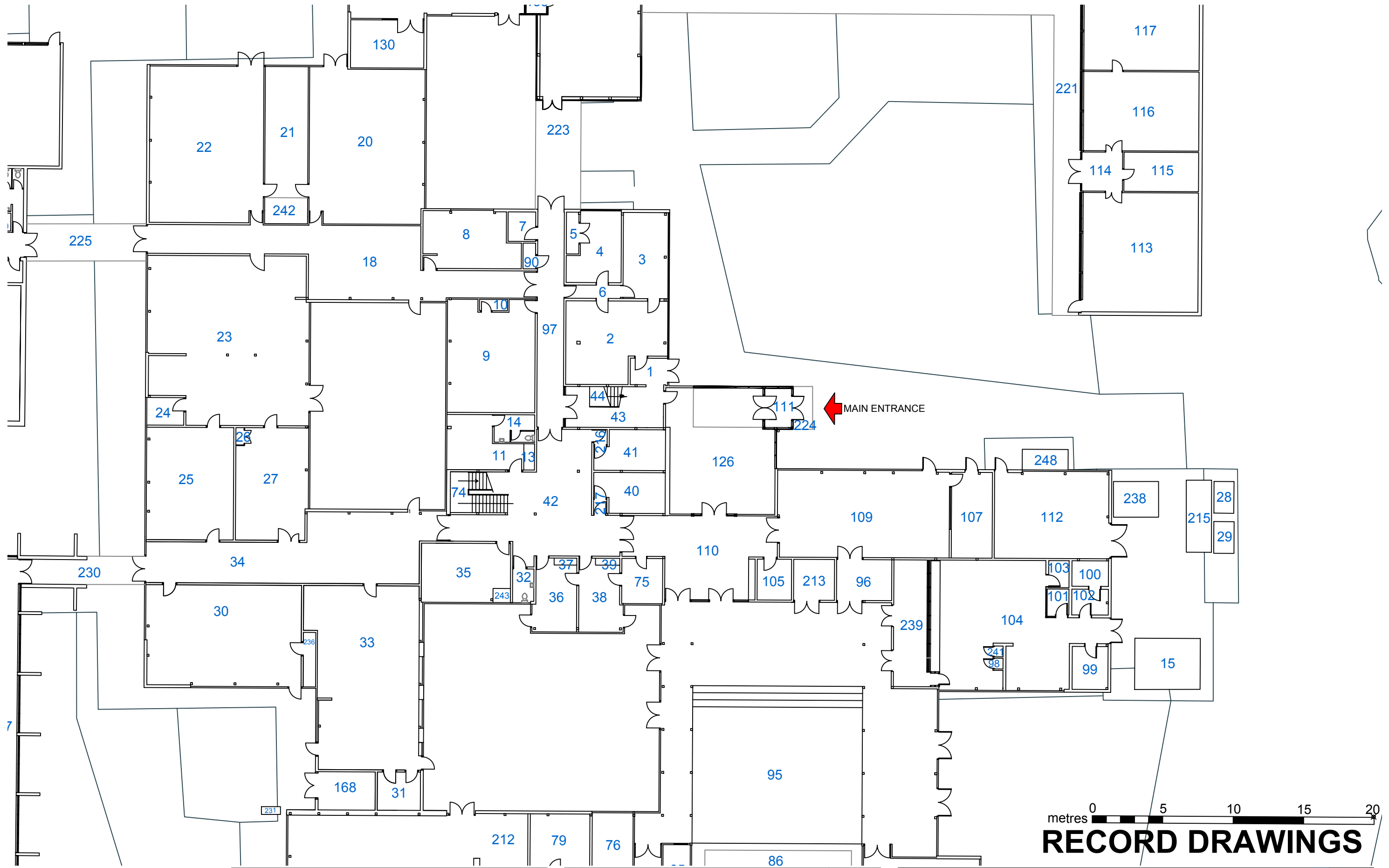


HCC Property Services,
Three Minsters House,
76 High Street, Winchester SO23 8UL.
tel: (01962) 847801

Notes	
1 This drawing is © copyright Hampshire County Council 2012. No unauthorised reproduction permitted. All rights reserved.	3 This map is reproduced from Ordnance Survey material with the permission of Ordnance Survey on behalf of the controller of Her Majesty's Stationery Office © Crown Copyright. Unauthorised reproduction infringes Crown Copyright and may lead to prosecution or civil proceedings. (100019180), (2012)
2 No dimensions are to be scaled from this drawing	

rev	description	date	by
A	HSS amendments added, Updated for Contract,	27/1/15	I.S

PROJECT				SHEET CONTENTS	
The Clere School And Technology College, Newbury RG20 9HP				Unit 001, 002, 026	
4162-10008000764				Ground Floor Plan	
				Sheet 3 of 7	
SCALE		DATE	DRAWN.	CHKD.	DRAWING No.
1:125@ A1		2005/2006	CadCap	---	01_Rec/003
1:250@ A3					FILE REF: 4162-10008000764-ClereSchool&TechnologyCollege, The.dwg
REVISION					A



metres 0 5 10 15 20

RECORD DRAWINGS

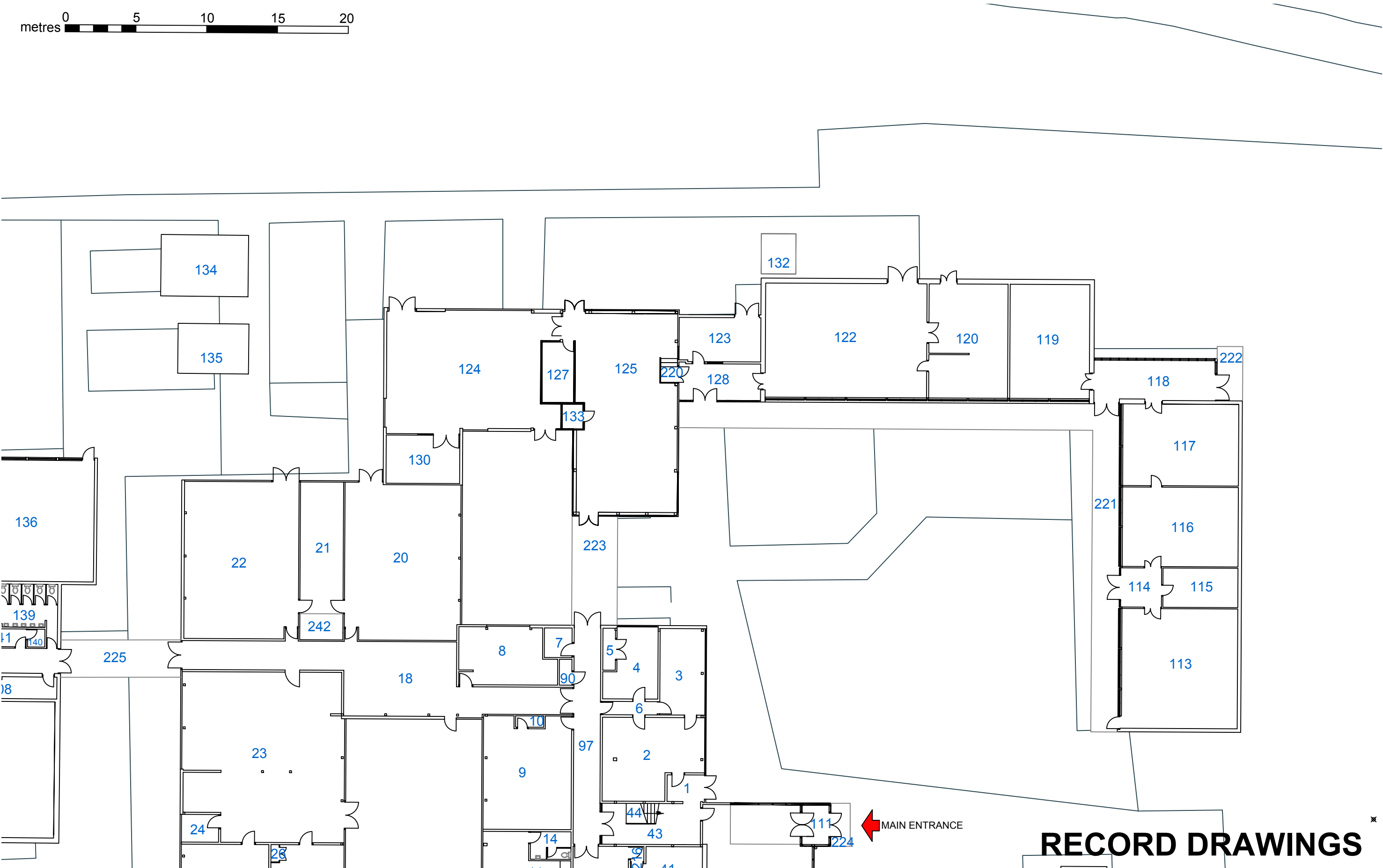
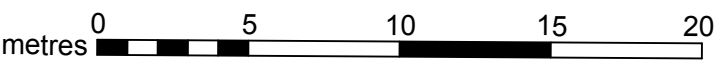
 Hampshire
County Council

HCC Property Services,
Three Minsters House,
76 High Street, Winchester SO23 8UL.
tel: (01962) 847801

Notes	
1 This drawing is © copyright Hampshire County Council 2012. No unauthorised reproduction permitted. All rights reserved.	3 This map is reproduced from Ordnance Survey material with the permission of Ordnance Survey on behalf of the controller of Her Majesty's Stationery Office © Crown Copyright. Unauthorised reproduction infringes Crown Copyright and may lead to prosecution or civil proceedings. (100019180), (2012)
2 No dimensions are to be scaled from this drawing	

rev	description	date	by
A	HSS amendments added, Updated for Contract,	27/1/15	I.S

PROJECT				SHEET CONTENTS	
The Clere School And Technology College, Newbury RG20 9HP				Unit 001,019,021,027,028	
4162-10008000764				031, Ground Floor Plan	
				Sheet 4 of 7	
				Property Services	
SCALE		DATE	DRAWN.	CHKD.	DRAWING No.
1:125@ A1		2005/2006	CadCap	---	01_Rec/004
1:250@ A3					FILE REF: 4162-10008000764-ClereSchool&TechnologyCollege, The.dwg
					REVISION
					A



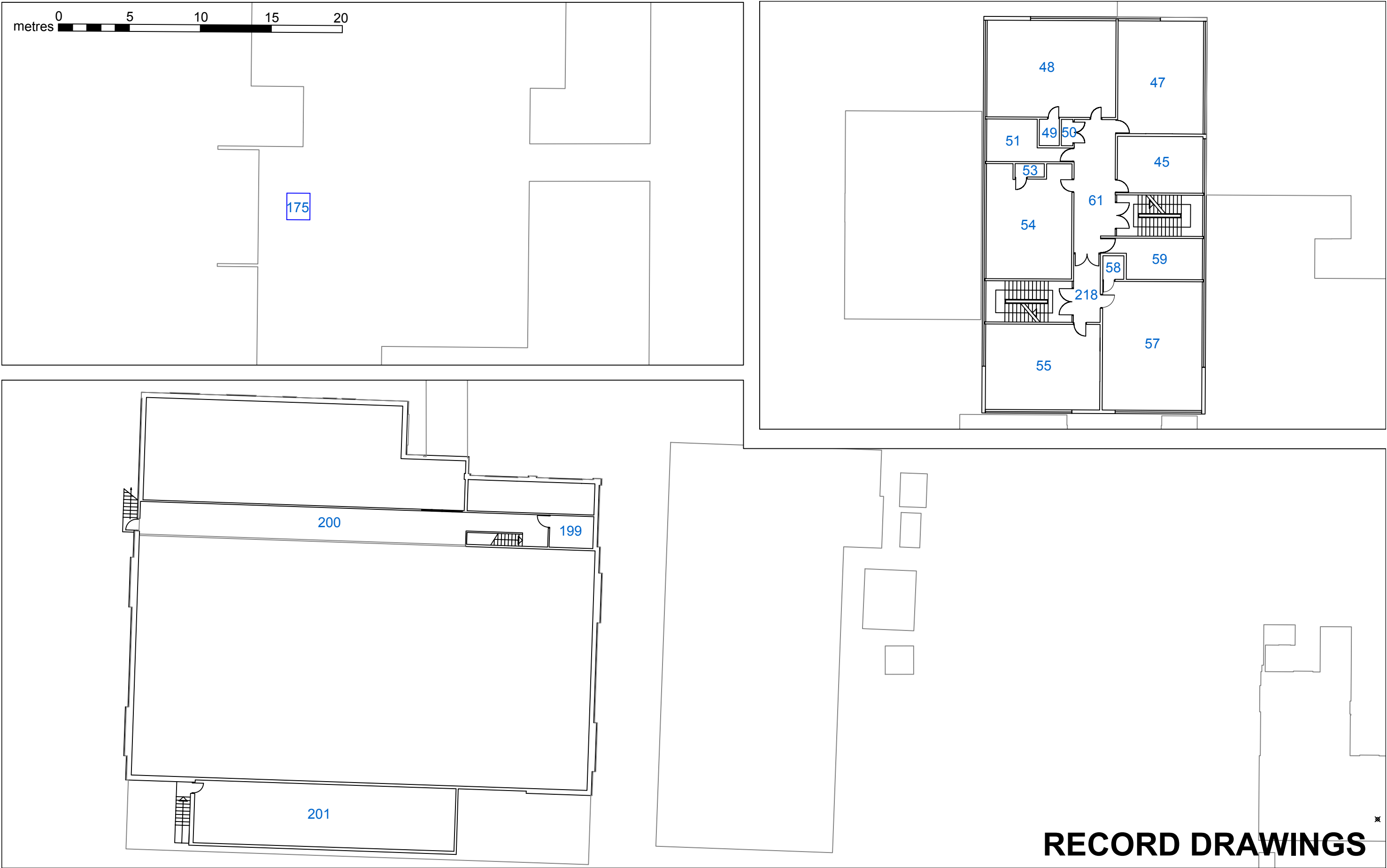
 Hampshire
County Council

HCC Property Services,
Three Minsters House,
76 High Street, Winchester SO23 8UL.
tel: (01962) 847801

Notes	
1 This drawing is © copyright Hampshire County Council 2012. No unauthorised reproduction permitted. All rights reserved.	3 This map is reproduced from Ordnance Survey material with the permission of Ordnance Survey on behalf of the controller of Her Majesty's Stationery Office © Crown Copyright. Unauthorised reproduction infringes Crown Copyright and may lead to prosecution or civil proceedings. (100019180), (2012)
2 No dimensions are to be scaled from this drawing	

rev	description	date	by
A	HSS amendments added, Updated for Contract,	27/1/15	I.S

PROJECT				SHEET CONTENTS	
The Clere School And Technology College, Newbury RG20 9HP				Unit 001,007,011,020	
4162-10008000764				Ground Floor Plan	
				Sheet 5 of 7	
				Property Services	
SCALE		DATE	DRAWN.	CHKD.	DRAWING No.
1:125@ A1					01_Rec/005
1:250@ A3		2005/2006	CadCap	---	FILE REF: 4162-10008000764-ClereSchool&TechnologyCollege, The.dwg
					REVISION
					A



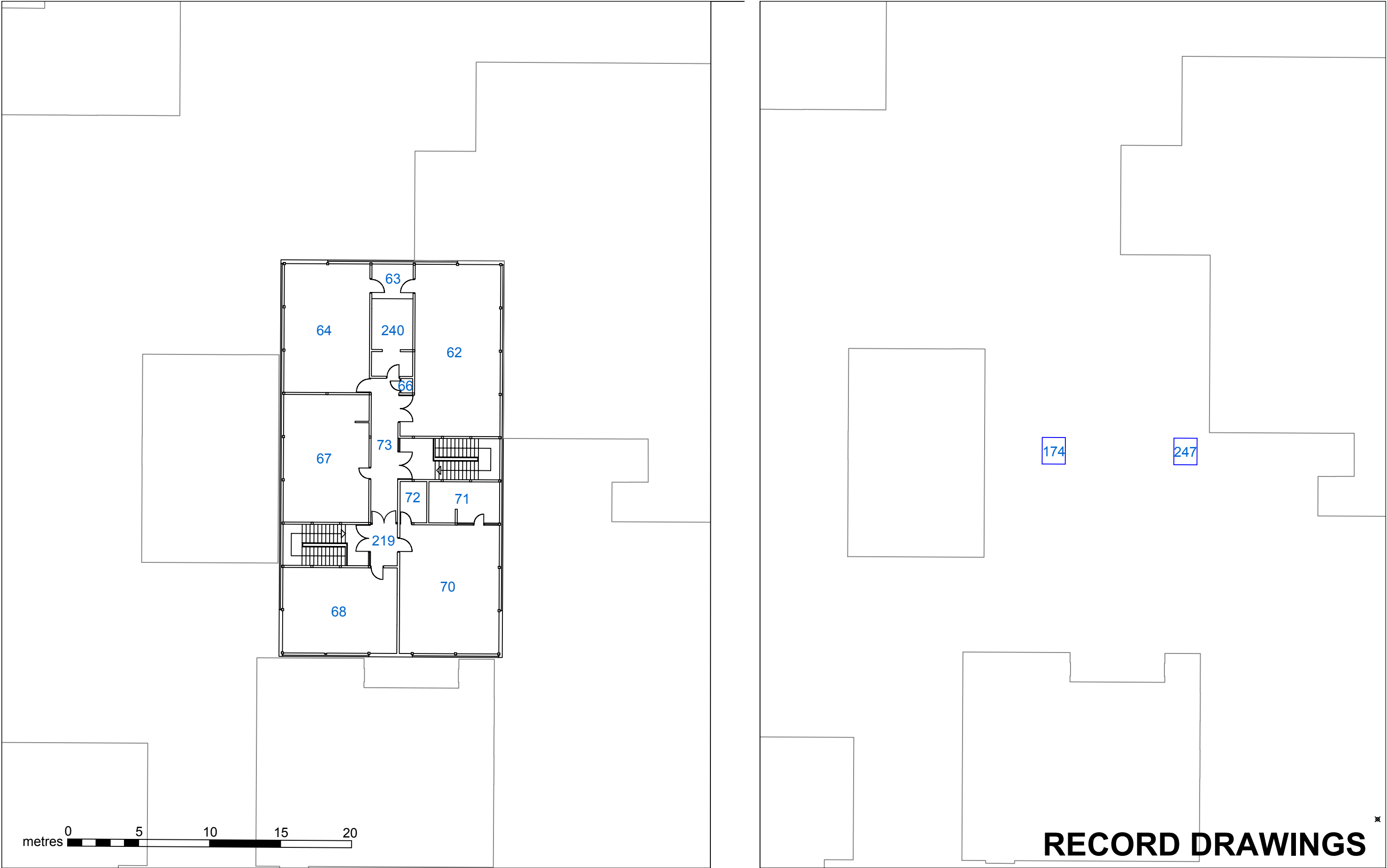
HCC Property Services,
Three Minsters House,
76 High Street, Winchester SO23 8UL.
tel: (01962) 847801

Notes	
1 This drawing is © copyright Hampshire County Council 2012. No unauthorised reproduction permitted. All rights reserved.	3 This map is reproduced from Ordnance Survey material with the permission of Ordnance Survey on behalf of the controller of Her Majesty's Stationery Office © Crown Copyright. Unauthorised reproduction infringes Crown Copyright and may lead to prosecution or civil proceedings. (100019180), (2012)
2 No dimensions are to be scaled from this drawing	

rev	description	date	by
A	HSS amendments added, Updated for Contract,	27/1/15	I.S

PROJECT				SHEET CONTENTS	
The Clere School And Technology College, Newbury RG20 9HP				Unit 001, 002, 017	
4162-10008000764				First Floor Layout	
				Sheet 6 of 7	
SCALE		DATE	DRAWN.	CHKD.	DRAWING No.
1:125@ A1		2005/2006	CadCap	---	01_Rec/006
1:250@ A3					FILE REF: 4162-10008000764-ClereSchool&TechnologyCollege, The.dwg
REVISION					A





HCC Property Services,
Three Minsters House,
76 High Street, Winchester SO23 8UL.
tel: (01962) 847801

Notes	
1 This drawing is © copyright Hampshire County Council 2012. No unauthorised reproduction permitted. All rights reserved.	3 This map is reproduced from Ordnance Survey material with the permission of Ordnance Survey on behalf of the controller of Her Majesty's Stationery Office © Crown Copyright. Unauthorised reproduction infringes Crown Copyright and may lead to prosecution or civil proceedings. (100019180), (2012)
2 No dimensions are to be scaled from this drawing	

rev	description	date	by
A	HSS amendments added, Updated for Contract,	27/1/15	I.S

PROJECT				SHEET CONTENTS	
The Clere School And Technology College, Newbury RG20 9HP				Unit 001	
4162-10008000764				Second Floor Layout	
				Sheet 7 of 7	
SCALE		DATE	DRAWN.	CHKD.	DRAWING No.
1:125@ A1		2005/2006	CadCap	---	01_Rec/007
1:250@ A3					REVISION
					A